

# 1 Minute Guide to the ESCB

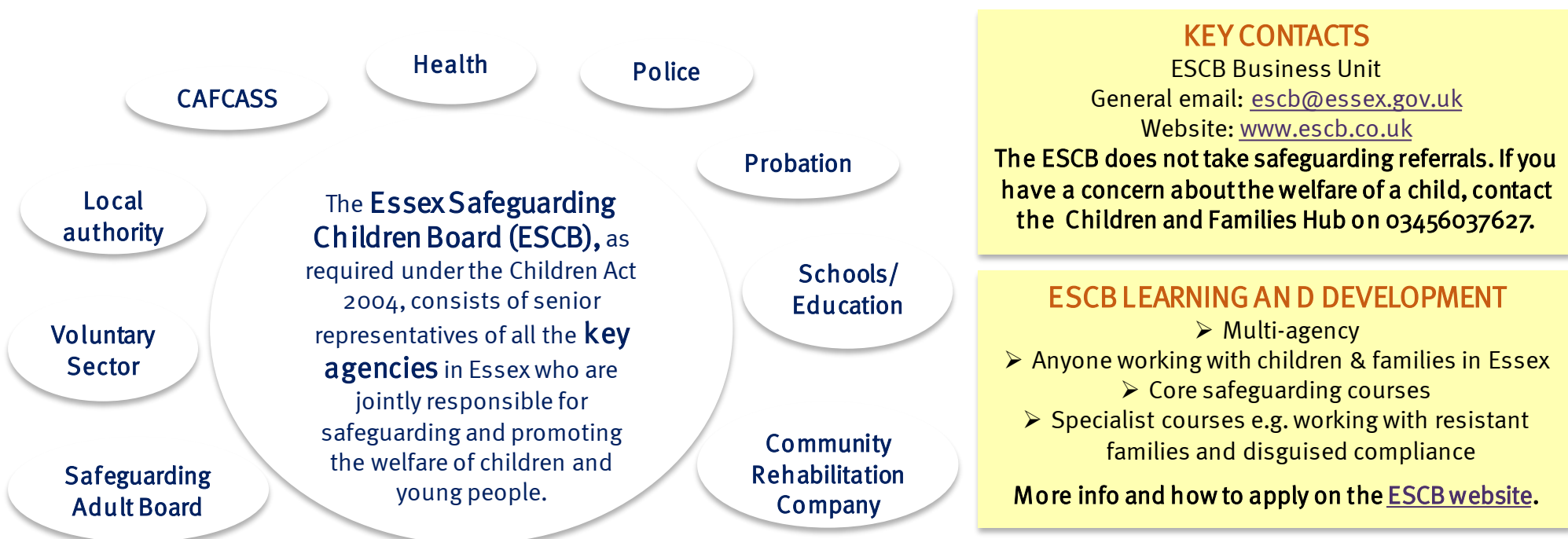
## OUR OBJECTIVE

Co-ordinate local work undertaken by all agencies and individuals to **safeguard and promote the welfare** of children and young people **AND** ensure the effectiveness of that work.

Children and young people, their welfare, protection and the promotion of their best interests are at the heart of everything the ESCB does.

## OUR VISION

For Essex to be a child friendly county in which children and young people are safe from harm in their families, their communities and their neighbourhoods.



## HOW DOES THE BOARD WORK?

The ESCB is the **whole partnership structure**. It includes a **Strategic Executive** responsible for making key strategic decisions relating to safeguarding matters, an Essex-wide **ESCB Assembly** of wider safeguarding partners that meets twice a year and quadrant-based **Stay Safe Groups**, which address local safeguarding issues, while **ESCB Sub Committees** address specific areas of partnership work.

The work of the Board is co-ordinated by the ESCB Support Team. The Board **publishes an Annual Report** on the effectiveness of safeguarding arrangements in the county on its website.

### FUNCTIONS OF BOARD

- Develop safeguarding policies and procedures
- Communicate to partner agencies and raise awareness of the need to safeguard and promote the welfare of children
- Monitor and evaluate the effectiveness of what is done by partner agencies, individually and collectively, to safeguard and promote the welfare of children and young people
- Participate in the planning of children's services in Essex
- Undertake serious case reviews and advise partners on lessons to be learned.

### SUB-COMMITTEES

Each sub-committee focusses on a specific area of work and has senior representation from ESCB partner agencies.

- Serious Case Review
- Child Death Review
- Learning and Development
- Performance, Audit & Quality Assurance
- Policy, Procedures and Practice Development
- Child Exploitation and Missing
- Communications

### SAFEGUARDING FORUMS

- Health Executive Forum
- City, District and Borough Councils safeguarding leads group

### OTHER STRATEGIC GROUPS

- Children's and Young People's Partnership
- Health and Wellbeing Board

## WHAT ARE SERIOUS CASE REVIEWS?

The ESCB is responsible for initiating a Serious Case Review (SCR) where there has been a death of a child or young person and abuse or neglect is known or suspected, or where there has been a serious injury and there are concerns about interagency working.

### PURPOSE

- Lessons to be learnt from the case?
- Lessons to be learnt from the way in which local professionals and organisations worked together?

From these lessons, the ESCB can **identify what agencies need to do to improve** inter-agency safeguarding.

### SERIOUS CASE REVIEW SUB-COMMITTEE

- ✓ Considers potential cases for review
- ✓ Makes recommendations to the ESCB Chair as to whether criteria are met for undertaking an SCR
- ✓ Makes decisions about the process for reviews; and oversees each one.

SCRs must be conducted in line with the 'Working Together to Safeguard Children' guidance (2015), and completed reviews published on the ESCB website.